

## SPECIAL EVENTS

## Connecting people who care with causes that matter

NONPROFIT PLANNED GIVING  
INFORMATION SESSION:

On June 26, 65 nonprofits gathered at the Chester County Historical Society to learn how the Community Foundation can help market and manage planned giving services on behalf of their nonprofit charity.

Attendees learned that the Community Foundation can assist in marketing planned giving by providing brochures, web site language, newsletter articles, and seminars designed to increase planned giving visibility. Attendees also learned that the Community Foundation can help nonprofits by bringing in highly experienced estate planners, bankers, wealth managers, and financial planners, to help donors make well-informed planned giving decisions.

The Community Foundation has chosen First National Bank of Chester County to administer its planned giving investments. For further detail on CCCF's planned giving services, contact Beth Harper Briglia at 610/696-8045 or Karen Simmons at 610/696-8845.

## JENNER'S POND INFORMATION SESSION:

On July 19, residents of Jenner's Pond Retirement Community learned how the Community Foundation can help them leave a legacy.

Emphasizing the flexibility and one-stop-shop nature of the Community Foundation, President/CEO Karen Simmons described how residents "can give to Jenner's Pond, to their favorite educational and health institutions, and to the smaller charities providing essential services in the backyard beyond Jenner's Pond."

Dick Hutton, CCCF's host, related his goal to "make all the charitable gifts that I can, so that Uncle Sam gets as little tax money as possible...It is important not only to make a difference now, but to leave a lasting endowment that will continue to help people long after I'm gone."

For further details on any of these programs and services, contact Beth Harper Briglia at 610/696-8045 or Karen Simmons at 610/696-8845.

## BEHIND THE SCENES TOURS:

Over 75 fund advisors and friends attended CCCF's five Spring 2003 Behind the Scenes Tours. The tours were graciously hosted in Phoenixville at the Colonial Theatre, Great Valley at the Wharton-Esherick Museum, Kennett Square at The Center, Coatesville at the Lukens Executive Office Building, and West Chester at the Chester County Art Association.

Attendees enjoyed learning about each region from overview speakers, including Barbara Cohen of the Phoenixville Chamber of Commerce, Tom Payne of EDIS, Tredyffrin Township Manager Joseph Janasik, Coatesville City Manager Paul Janssen, and Chester County Commissioner Andrew Dinniman. The Commissioner's discussion of "The Land, and The People Living on the Land" was especially compelling.

Overview sessions were followed by a "behind the scenes" discussion of how the Community Foundation helps families make philanthropy decisions, presented by Beth Harper Briglia, CCCF's Director of Donor Services and Grantmaking. The sessions were capped with eye-opening "behind the scenes" tours of each site, where participants learned about the history, operations, and future plans of five of Chester County's most precious nonprofit resources. The Community Foundation thanks all the speakers, tour guides, fund advisors, and friends for committing their time, wisdom, and talents. By popular demand, the Community Foundation will make Behind the Scenes Tours an annual event!

Chester County  
COMMUNITY FOUNDATION

The Lincoln Building  
28 W. Market Street | West Chester, PA 19382

Let your legacy make a difference in Chester County

Chester County  
COMMUNITY FOUNDATION

Let your legacy make a difference in  
Chester County

## MISSION:

*The Chester County Community Foundation leads, inspires and encourages all individuals and organizations to create or contribute to lasting philanthropic charitable legacies, to improve the quality of life primarily in Chester County.*

A copy of the official registration and financial information for the Chester County Community Foundation may be obtained by calling the Pennsylvania Department of State at 1-800-732-0999 (toll free in Pennsylvania). Registration does not imply endorsement.

## BOARD OF DIRECTORS

Eva L. Verplanck, Ph.D., Chair  
Community Leader

John Celii, Jr., Vice Chair  
Retired, Cisco Systems

Elizabeth R. Moran, Vice Chair  
Trustee, 1957 Charity Trust

Kenneth W. Tunnell, Vice Chair  
Managing Partner, Tanglewood  
Associates

John A. Henry, Corporate  
Secretary/Treasurer  
Chief Operating Officer,  
Rex Medical, LP

Madeleine Wing Adler, Ph.D.  
President, West Chester University

Frank J. Brewer  
CEO, Security Services &  
Technologies

Anne M. Congdon  
Community Volunteer

Donna Coughney  
President and CEO  
Chester Valley Bancorp,  
First Financial Bank

David M. Frees, III, Esq.  
Partner, Unruh, Turner, Burke  
& Frees

John H. Hewlett, III, Ed.D.  
Director of Human Resources,  
West Chester Area School District

Carol Ware Gates  
Community Volunteer

Richard J. Hutton  
Retired President, Star Roses

Mary MacKinnon  
Community Volunteer

Moira Mumma  
President, Community Coalition

Thomas Paulus  
President, Patriot Advisors

Burton Rothenberger  
Retired, Sunoco, Inc.

L. Peter Temple, Esq.  
Partner, Larmore, Scarlett,  
Myers & Temple

Karen A. Simmons, ex officio  
President/CEO, Chester County  
Community Foundation

## EMERITI

Dr. Henry A. Jordan  
Chairman Emeritus

John A. Featherman, III, Esq.  
Director Emeritus  
Partner, MacEree Harvey, Ltd.

## OPERATING STAFF

Karen A. Simmons  
President/CEO

Celeste R. Barr, CPA  
Vice President for Business Affairs

Tracy M. Allvord  
Business Affairs Administrative  
Assistant

Beth Harper Briglia, CPA  
Director of Donor Services &  
Grantmaking

TinaMarie V. Frock  
Information Systems Manager

Kathryn A. Karney  
Public Relations and Donor  
Services Associate

Gerl Quarracino  
Business Manager

Chester County  
COMMUNITY FOUNDATION

summer  
2003

Foundation  
forecast

## PARTNERS IN PHILANTHROPY

## FOR GOOD. FOR EVER.

The official national figures are in. The fact is, charitable giving held up in 2002, in spite of an uncertain economy, international turmoil and increased unemployment.

Americans gave \$241 billion in 2002 per *Giving U.S.A.* This is only a .5% decrease, much smaller than anticipated. Human service nonprofits suffered the steepest decline in contributions, falling 11% to \$18.7 billion.

"Human service nonprofits tend to be the third tier," observes Karen Simmons, CCCF President/CEO. "People readily give first to educational institutions-their alma mater and/or their children's schools. They then give to the second tier-health, arts, religion or environment-where they feel direct personal benefit. Human service is the third "tier" of causes. But in a sense, human service giving is the most philanthropic of all, since donors are not getting a service in return-they are helping needy people in the community."

Eva Verplanck, CCCF Board Chair, notes that "Chester County is the wealthiest county in Pennsylvania. There are many individuals and families with the resources to look at the longer horizon, so their compassion can make a difference for generations to come. Their compassion is important, especially when you realize that one out of every ten Chester County households needs help obtaining the most basic of human requirements, such as food, shelter and/or clothing. "

*CCCCF is privileged to connect people who care with causes that matter, so their legacy can make a difference in Chester County, now and forever.*

The Lincoln Building  
28 W. Market Street | West Chester, PA 19382  
(610) 696-8211 voice | (610) 696-8213 fax | info@chescocf.org  
www.chescocf.org

Let your legacy  
make a difference in  
Chester County

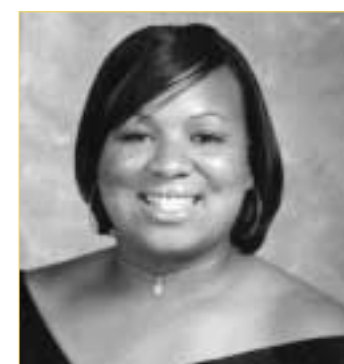


## COMMUNITY GRANTMAKING & SCHOLARSHIPS

The Community Foundation holds 30 scholarship funds in trust, started by individuals, families and community groups who care about helping students pursue education in trade schools, colleges and universities. A few of these scholarship funds are highlighted:

### THE ALICE M. THOMAS SCHOLARSHIP FUND

was created by the Honorable Clifford DeBaptiste to honor Mrs. Thomas' dedication to giving minority students of Henderson High School equal opportunities for achievement. A counselor to all students and a beacon in particular to black students, one of Mrs. Thomas' goals is "to make sure all students go to college, a vocational program or a trade, so they do something that will give them a productive life." In July, the Fund awarded two scholarships to:



Kellon Anderson will be attending Florida A&M University



Erin Nash will be attending Delaware County Community College



Eric Butcher will be attending University of North Carolina at Chapel Hill



Emily Williams will be attending Philadelphia University

### UPCOMING EVENTS

Please save the date for these Community Foundation events. Invitations will be mailed several weeks prior. If you would like more information, please contact Kathryn Karney at the Community Foundation at 610/696-4383 or visit our website at [www.chescocf.org](http://www.chescocf.org)

- Annual Meeting at West Chester University Sykes Hall . . . Monday, October 13, 2003 at 6 p.m.
- Chester County Funders: "Planning for a Healthy Chester County" . . . Thursday, October 23, 2003 at 8:30 a.m.
- Old Fashioned Christmas Holiday Open House . . . Friday, December 5, 2003
- Economic/Philanthropy Outlook 2004 . . . January 2004
- "Growing Your Endowment" training . . . February 2004
- Behind the Scenes Tours . . . May & June 2004
- "Giving for Good" 10th Anniversary Gala . . . June 2004

### STAFF TRANSITIONS

CCCF is pleased to announce that Kathryn A. Karney has joined the Community Foundation staff as Public Relations and Donor Services Associate.

Kathryn brings 15 years of experience working in Wayne, PA in administration, customer service, public relations, and bookkeeping. She has been employed by Precision Craftsmen as a secretary; Wayne Jewelers as an assistant bookkeeper; and Women's Resource Center as Administrative Coordinator. Working closely with Executive Director Cheryl Lucas for nine years, Kathryn helped the organization grow by providing program coordination, overseeing the client enrollment process, undertaking public relations initiatives, coordinating annual giving campaigns and event organization, bookkeeping, and providing administrative and statistical supports. Two years ago, Kathryn and her husband, Kevin, relocated from Wayne to West Chester.

Kathryn brings to the Community Foundation a unique combination of administrative, financial, and public relations talents. In addition to her CCCF administrative responsibilities, she will work with Beth Harper Briglia on Donor Services and Grants Administration, and with President/CEO Karen Simmons on Marketing and Fund Development.



Kathryn will follow in the footsteps of Aline Reece. Since 1999, Aline has provided administrative assistance to the Community Foundation, undertaking progressively more responsible projects administering CCCF's scholarship program and assisting with public relations and fund development. Aline is departing from the Community Foundation so that she can pursue full-time studies at West Chester University to earn her Bachelor's degree majoring in Business. After that, Aline intends to join the Peace Corps for a two-year stint.

Please join us in welcoming Kathryn Karney to our staff, and in bidding Aline Reece a fond farewell.

### BUILDING COMMUNITY ENDOWMENT: FUNDS OF THE FOUNDATION



**THE CHADDS FORD HISTORICAL SOCIETY ENDOWMENT FUND:** At the April 27 annual membership meeting of the Chadds Ford Historical Society, Board President Carlos "Cap" Weil, Jr. announced the creation of an Endowment Fund to benefit the Historical Society. Due to the generosity and foresight of long-time member Genevra Rumford, who provided for the Historical Society in her will, the Chadds Ford

Historical Society allocated a portion of Mrs. Rumford's bequest to start a permanent Endowment Fund under the care of the Chester County Community Foundation.

"Establishing this Endowment Fund is a significant milestone, and we are grateful to Genevra for her legacy. But please be aware that we are starting our endowment with a very modest amount, as far as endowments go," stated Cap Weil. "Everyone is urged to help us grow the Endowment Fund, by giving gifts both small and large, today and as part of their future estate planning."

The mission of the Chadds Ford Historical Society is to preserve the properties, records and artifacts; to interpret the history; and to educate the public on the way of life in the Chadds Ford area with emphasis on the 18th century. It owns, operates and maintains two restored historical sites, the John Chadds House and the Barns-Brinton House. Details can be further explored at [www.chaddsfordhistory.org/](http://www.chaddsfordhistory.org/) or by calling 610/388-7376.



## FACES OF THE FOUNDATION

One of the many strengths of the Chester County Community Foundation is the strong leadership the Board has provided over the years. Our two newest Board Members and our Chair are profiled here. Meet other Board Members in upcoming newsletters.



DONNA COUGHEY

Donna Coughley is the President and Chief Executive Officer of Chester Valley Bancorp Inc. and its subsidiary, First Financial Bank. Donna has over 30 years of experience in financial services. Prior to joining Chester Valley Bancorp, she held the position of Chairwoman, President and CEO of Mellon Bank

Delaware. She received her B.S. in Business Management from Point Park College of Pittsburgh and her M.B.A. from Villanova University.

Donna places high value on community involvement. She serves in leadership roles on many boards, including the United Way of Chester County; the Chester County Chamber of Business and Industry; the YMCA of the Brandywine Valley; the Brandywine Hospital; the Chester County Economic Development Council; and the Board of Trustees at Wilmington College.

She has been named among the Philadelphia Business Journal's "50 Women of Distinction" in 2002, and as the Great Valley Regional Chamber of Commerce "Business Woman of the Year" for 2002.

Donna lives with her husband Keith and son Jeffrey in Pennsbury Township.



JOHN H. HEWLETT, III, ED.D.

Education has been a lifetime focus for Dr. John H. Hewlett, III. In 1960, he began his career as a Chemistry teacher in the Richmond Public School System. 1966 marked the beginning of decades of dedicated service to the West Chester Area School District, starting as a Chemistry teacher and Track and Field coach. In 1975 John transitioned into school administration, becoming Assistant Secondary Principal. Since 1988, he has served as Director of Human Resources for the West Chester Area School District.

Throughout his career, John has been a sought-after consultant, working with the Pennsylvania Department of Education, the Counseling Education Department of Cheyney State University, the Education Department of Lincoln University, the National Science Foundation, and the National Committee for School Desegregation. He is actively involved with many professional educational organizations and has been honored with several awards, including the National Science Foundation Fellow Award Warren H. Burton Community Service Award, and West Chester NAACP.

John is an active member of the Chester County community, serving on the Board of Family Service of Chester County. He has also been involved with the National Association for the Advancement of Colored People, the West Chester Community Center, and the West Chester Lions Club.

John holds four degrees: a B.S. in Biology from the Hampton University, M.Ed. in Chemistry from the Tuskegee University, a M.A. in Secondary School Administration from Villanova University, and an Ed.D. in Educational Leadership from the University of Pennsylvania.

John and his wife Mary reside in Downingtown. They both have created separate scholarship funds with the Community Foundation, to enable students to fulfill their dreams of higher education.



EVA L. VERPLANCK, PH.D., CHAIR OF THE BOARD

Eva L. Verplanck, Ph.D., of Kennett Square, is well-known for her active involvement as a community volunteer, where her expertise quickly brings her into the leadership spotlight.

In the health and human services area she has served on the Board, including as President, of the Neighborhood Health Agencies and Chester County Council of Home Health agencies. She is an active committee member of Planned Parenthood of Chester County, previously serving as Treasurer and President.

She is a member of the Board of the YWCA of New Castle County, Delaware and a past President. She served on the National Board of the YWCA of the U.S.A. and is currently a member of the YWCA World Service Council. In the past she was a member of the Board of United Way of Delaware and Chair of the Allocation Committee.

As evidence of her environmental concerns, Eva has served on the Board of the Red Clay Valley association since 1987, including a term as President. She is currently Treasurer of the Kennett Area Park Authority, serving since 1988.

Eva received the Lifetime Achievement Award from the Brandywine Chapter of the National Society of Fundraising Executives in 1994, and the Women of Vision Award from the YWCA of New Castle County in 1995.

Eva joined the Board of Directors of the Chester County Community Foundation in 2001, initially serving as Development Committee Chair. Her leadership skills were quickly recognized, and the Board elected her as Chair for a two-year term effective July 2002. In her first year, she has strengthened the committee structure and functioning, and helped CCCF focus on its core mission of increasing philanthropy through endowment building and planned giving.

Eva earned her B.A. from Radcliffe College and went on to earn her Ph.D. in Chemistry at Yale University. She then held positions as a Postdoctoral Fellow at Yale, a research appointment with rank of Instructor at Yale Department of Zoology, and a Research Associate at the Philadelphia Academy of Natural Sciences, Department of Limnology.